



ATYPON

# WebinarSeries

## Atypon Connect

Seamless access to publisher websites and  
researcher tools across the web

**Eleni Lialiamou**

Vice President, Product Management  
November 14, 2019

ATYPON



Eliminating barriers to research,  
industry-wide





## **Challenge #1:** **For researchers and practitioners**

Their workflow is interrupted by multiple logins as they try to access multiple publishers' websites and services, from editorial submission systems to ReadCube, Kudos, and Code Ocean....

A woman with dark, wavy hair and glasses is sitting at a desk, looking at a laptop. She is wearing a dark leather jacket over a turtleneck. The background is a soft, out-of-focus grey. The text is overlaid on the left side of the image.

A

A day in the life of a researcher,  
Katerina, *without* Connect

**5** separate user accounts

**5** logins



Articles

2 results (0.03 sec)

All versions

### Crime and the Life-Course, Prevention, Experiments, and Truth Seeking: Joan McCord's Pioneering Contributions to Criminology

[RE Tremblay, BC Welsh... - Annual Review of ..., 2019 - annualreviews.org](#)

A life-span developmental approach describes Joan McCord's career and highlights her pioneering contributions to criminology and, more broadly, to understanding human development. The main focus of this article is on her exceptional scientific contributions ...

☆ Related articles

### Crime and the Life-Course, Prevention, Experiments, and Truth Seeking: Joan Mccord's Pioneering Contributions to Criminology

[RE Tremblay, BC Welsh... - Annual Review of ..., 2019 - papers.ssrn.com](#)

A life-span developmental approach describes Joan McCord's career and highlights her pioneering contributions to criminology and, more broadly, to understanding human development. The main focus of this article is on her exceptional scientific contributions ...

Without  
Atypon  
Connect



Katerina performs a Google search  
from her home office.

JOURNALS A-Z

JOURNAL INFO

PRICING & SUBSCRIPTIONS

SUBSCRIBE TO OPEN

ABOUT

Search

Home / Annual Review of Criminology / Volume 2, 2019 / Tremblay, pp 1-20

Save | Email | Share

# Crime and the Life-Course, Prevention, Experiments, and Truth Seeking: Joan McCord's Pioneering Contributions to Criminology

## Annual Review of Criminology

Vol. 2:1-20 (Volume publication date January 2019)

First published as a Review in Advance on September 28, 2018

<https://doi.org/10.1146/annurev-criminol-011518-024712>

Richard E. Tremblay,<sup>1,2</sup> Brandon C. Welsh,<sup>3,4</sup> and Geoffrey Sayre-McCord<sup>5</sup>

Article Metrics

Choose Your Access Option

[Permissions](#) | [Reprints](#) | [Download Citation](#) | [Citation Alerts](#)

### Figures



[Next Article >>](#)



### Sections

ABSTRACT

KEYWORDS

Without  
Atyon  
Connect

She lands on an abstract at a publisher site  
as an anonymous user.

Literature Cited

Related Articles

Aichhorn A. **1935**. *Wayward Youth*. New York: Viking



EASE – The University's Authentication Service

Contact

University home > EASE

EASE

**Security Advice: Be careful of phishing messages directing people to fake login pages. Always hover over the URL and check it before you click it.**

Username:

Password:

Login now

Guidance

Do not share your password with anyone. We never ask you for your password in emails or via web forms other than this login page.

By using this service you agree to abide by The University of Edinburgh **Computing Regulations**.

Getting Help

- > Forgotten username?
- > Forgotten password?
- > I need help

Without  
Atypon  
Connect

**LOGIN #1:** She logs in to her university account...

# Crime and the Life-Course, Prevention, Experiments, and Truth Seeking: Joan McCord's Pioneering Contributions to Criminology

## Annual Review of Criminology

Vol. 2:1-20 (Volume publication date January 2019)  
First published as a Review in Advance on September 28, 2018  
<https://doi.org/10.1146/annurev-criminol-011518-024712>

**Richard E. Tremblay,<sup>1,2</sup> Brandon C. Welsh,<sup>3,4</sup> and Geoffrey Sayre-McCord<sup>5</sup>**

<sup>1</sup>Departments of Pediatrics and Psychology, University of Montreal, Montreal, Quebec H3C 3J7, Canada; email: [richard.ernest.tremblay@umontreal.ca](mailto:richard.ernest.tremblay@umontreal.ca)

<sup>2</sup>School of Public Health, University College Dublin, Dublin, Republic of Ireland

<sup>3</sup>School of Criminology and Criminal Justice, Northeastern University, Boston, Massachusetts 02115, USA

<sup>4</sup>Netherlands Institute for the Study of Crime and Law Enforcement, 1081 HV Amsterdam, The Netherlands

<sup>5</sup>Department of Philosophy, University of North Carolina at Chapel Hill, Chapel Hill, North Carolina 27599, USA

Download PDF

**Without  
Atyon  
Connect**

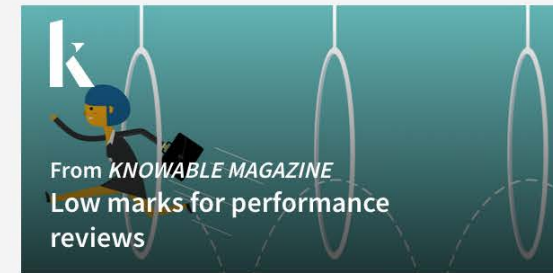
Permissions | Reprints | Download Citation | Citation Alerts

**...and gets access to the full-text article.**

### Figures



Next Article >>



Literature Cited

Related Articles

Aichhorn A. 1935. *Wayward Youth*. New





SEARCH

[Advanced Search](#)[Search Tips](#)

## Sign In: Registered Users

[Register](#)

Username:

Password:

Remember me

[Sign In](#)

Forgotten your password?  
[Log In Via Open Access](#)  
[Log In Via Your Institution](#)

Without  
Atypon  
Connect

**LOGIN #2:** She visits a different publisher where she has previously created a personal account, and is asked to log in.

OUTLINE INFO MATERIALS **NOTES** LINKS

**REMARQ**<sup>®</sup>

SIGN IN WITH EMAIL

Email

Password

Keep me logged in

**SIGN IN**

Forgot Password? [Click here.](#)

OR

CONNECT with

LINKEDIN

ORCID

GOOGLE

## Introduction

### Overview

East Asia's progress has come to symbolize how economic growth that is rapid and broadly shared can improve the lives of millions.<sup>1</sup> Since the late 1950s and early 1960s, a succession of economies has experienced the East Asian miracle—rapid economic growth that reduces poverty significantly, with little or no increase in income inequality. The initial success of the newly industrialized economies—Hong Kong SAR, China; Republic of Korea; Singapore; and Taiwan, China<sup>2</sup>—spread in the 1980s to Indonesia, Malaysia, and Thailand, as well as, most dramatically, to China. The poorer Southeast Asian economies of Cambodia, Lao People's Democratic Republic, and Vietnam have followed suit since the early 1990s.

A wave of prosperity has spread across East Asia. Today, three of five people can be considered economically secure in that they face a very low risk of falling into poverty. A solid middle class has emerged in most countries. But those successes do not guarantee inclusive economic growth—growth that reduces poverty and enables upward mobility and economic security for all. Economic progress varies from country to country, and extreme poverty is increasingly concentrated among specific groups. Roughly one-fifth of the region's population remains at risk of falling into poverty. Upward mobility is increasingly elusive for people in all income groups. Such a decrease in mobility reflects a growing concentration of income and wealth, as well as limited access to basic social services, which are often of poor quality.

*Riding the Wave* is about sustaining the momentum of the East Asian miracle and continuing to improve the lives of millions—across all income groups—while taking into account their different needs. The report's main area of interest is developing East Asia and Pacific, taken to comprise Cambodia, China, Indonesia, Lao PDR, Malaysia, Mongolia, Myanmar, Papua New Guinea, the Philippines, Thailand, Timor-Leste, Vietnam, and the Pacific Island countries. Past performance has created expectations that

**KF** Katerina  
Logout

Download Document  
EPUB • 12.7 MB

Save for offline reading  
EPUB • 12.7 MB

View offline documents

Print Document

Display Options >

**Without Atyon Connect LOGIN #3. To annotate an article for her colleagues, she must sign in to Remarq.**



Journal  
**International Journal of Control** >  
Volume 90, 2017 - Issue 8

Enter keywords, authors, DOI etc.

This Journal



Advanced search

125

Views

4

CrossRef citations  
to date

12

Altmetric

Original Articles

# Subspace identification with constraints on the impulse response

Ivan Markovsky & Guillaume Mercère

Pages 1728-1735 | Received 03 Mar 2016, Accepted 29 Jul 2016, Accepted author version posted online: 30 Aug 2016, Published online: 12 Sep 2016

Download citation <https://doi.org/10.1080/00207179.2016.1219922>



System identification with prior knowledge ... (Ivan Markovsky)

Edit Capsule Sign up

Files

Commands

Reproducibility

README.md

Subspace identification with constraints on the impulse response

Summary

Timeline

Ivan Markovsky committed Jan 22, 2019

Version 1.0

Re-run

Currently viewing

## People also read

- Article
- [Recursive subspace identification subject to relatively slow time-varying load disturbance](#)

Without  
Atyon  
Connect

**LOGIN #4:** To view and run the article's code, she has to sign in to Code Ocean.

[Insert Special Character](#)

**Please Enter the Following**

Username:

Password:

Author Login

Reviewer Login

Editor Login

Publisher Login

Or Login via:



[What is ORCID?](#)

[Send Login Details](#)

[Register Now](#)

[Login Help](#)

**Attention:** There is a new Copyright Transfer Agreement form that allows for a Digital Signature. You can find that here: [Copyright Transfer Agreement \(2.28.19\)](#). You can find instructions for creating a Digital Signature in Adobe here: [Instructions: Create a Digital Signature](#).

Software Copyright © 2019 Aries Systems Corporation.  
[Aries Privacy Policy](#) | [Publisher's Data Use Privacy Policy](#)



Without  
Atypon  
Connect

**LOGIN #5:** To submit a paper, she has to sign in to the journal's editorial management system.

A

## SOLUTION



connect

- 1 Connect user account
- 5 websites and applications
- 0 logins

*A day in the life of Katerina—  
with Connect...*



Articles

2 results (0.03 sec)

All versions

Crime and the Life-Course, Prevention, Experiments, and Truth Seeking: Joan McCord's Pioneering Contributions to Criminology

[RE Tremblay, BC Welsh... - Annual Review of ..., 2019 - annualreviews.org](#)

A life-span developmental approach describes Joan McCord's career and highlights her pioneering contributions to criminology and, more broadly, to understanding human development. The main focus of this article is on her exceptional scientific contributions ...

☆ [Related articles](#)

Crime and the Life-Course, Prevention, Experiments, and Truth Seeking: Joan Mccord's Pioneering Contributions to Criminology

[RE Tremblay, BC Welsh... - Annual Review of ..., 2019 - papers.ssrn.com](#)

A life-span developmental approach describes Joan McCord's career and highlights her pioneering contributions to criminology and, more broadly, to understanding human development. The main focus of this article is on her exceptional scientific contributions ...

With  
Atyon  
Connect



Katerina performs a Google Scholar search from her home office.

JOURNALS A-Z

JOURNAL INFO

PRICING & SUBSCRIPTIONS

SUBSCRIBE TO OPEN

ABOUT

Search

Home / Annual Review of Criminology / Volume 2, 2019 / Tremblay, pp 1-20

Save | Email | Share | f | | | |

# Crime and the Life-Course, Prevention, Experiments, and Truth Seeking: Joan McCord's Pioneering Contributions to Criminology

## Annual Review of Criminology

Vol. 2:1-20 (Volume publication date January 2019)  
First published as a Review in Advance on September 28, 2018  
<https://doi.org/10.1146/annurev-criminol-011518-024712>

Richard E. Tremblay,<sup>1,2</sup> Brandon C. Welsh,<sup>3,4</sup> and Geoffrey Sayre-McCord<sup>5</sup>

<sup>1</sup>Departments of Pediatrics and Psychology, University of Montreal, Montreal, Quebec H3C 3J7, Canada; email: richard.ernest.tremblay@umontreal.ca

<sup>2</sup>School of Public Health, University College Dublin, Dublin, Republic of Ireland

<sup>3</sup>School of Criminology and Criminal Justice, Northeastern University, Boston, Massachusetts 02115, USA

<sup>4</sup>Netherlands Institute for the Study of Crime and Law Enforcement, 1081 HV Amsterdam, The Netherlands

<sup>5</sup>Department of Philosophy, University of North Carolina at Chapel Hill, Chapel Hill, North Carolina 27599, USA

With  
Atypon  
Connect

Download PDF | Permissions | Reprints | Download Citation | Citation Alerts

She clicks on an article and is taken to the full-text version. She has already been logged in.

Figures



Next Article >>




Literature Cited | Related Articles

1935 Wayward Youth New

Navigation bar: < | > | CITE | Riding the Wave: An East Asian Miracle for ... | Node 11 of 22 | >

Left sidebar: OUTLINE | INFO | MATERIALS | NOTES | LINKS


Annotations | Groups | 

Create private note

East Asia's

Add a title to your note

Type the text of your note

H<sub>1</sub> H<sub>2</sub> | B I U | ≡ | ≡ ≡ | x<sub>2</sub> x' f<sub>x</sub> | 

Add a private tag

SAVE

Right sidebar: KF Katerina Logout

Download Document EPUB • 12.7 MB

Save for offline reading EPUB • 12.7 MB

View offline documents

Print Document

Display Options >

Article text:  
An economic evaluation was conducted from the perspective of the United Kingdom NHS and Personal Social Services, based on evidence from the 460 participants in the Wound Management of Open Lower Limb Fractures (WOLLF) trial. Economic outcomes were collected prospectively over the 12-month follow-up period using trial case report forms and participant-completed questionnaires. Bivariate regression of costs (given in £, 2014 to 2015 prices) and quality-adjusted life-years (QALYs), with multiple imputation of missing data, was conducted to estimate the incremental cost per QALY gained associated with NPWT dressings. Sensitivity and subgroup analyses were undertaken to assess the impacts of uncertainty and heterogeneity, respectively, surrounding aspects of the economic evaluation.

Results  
The base case analysis produced an incremental cost-effectiveness ratio of £267 910 per QALY gained, reflecting higher costs on average (£678; 95% confidence interval (CI) -£1082 to £2438) and only marginally higher QALYS (0.002; 95% CI -0.054 to 0.059) in the NPWT group. The probability that NPWT is cost-effective in this patient population did not exceed 27% regardless of the value of the cost-effectiveness threshold. This result remained robust to several sensitivity and subgroup analyses.

Conclusion  
This trial-based economic evaluation suggests that NPWT is unlikely to be a cost-effective strategy for improving outcomes in adult patients with severe open fractures of the lower limb.

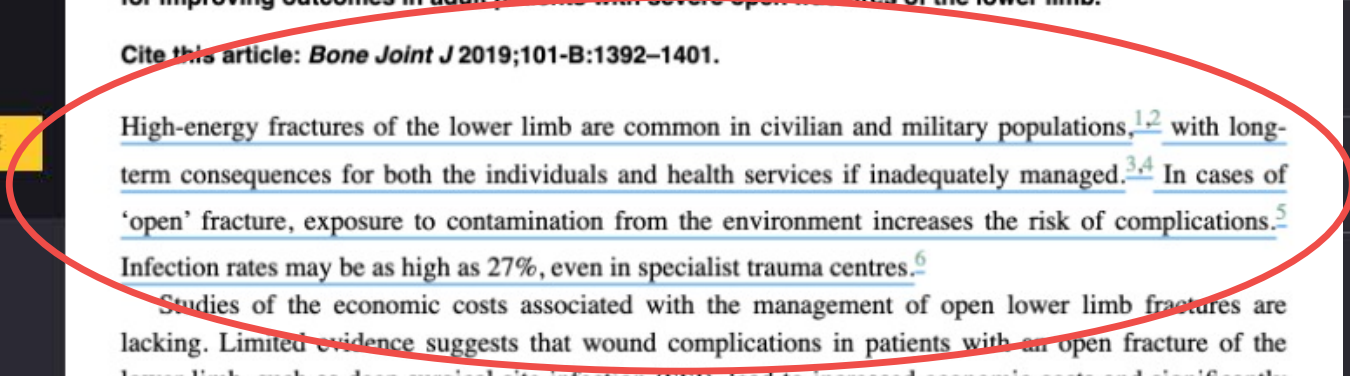
Cite this article: *Bone Joint J* 2019;101-B:1392–1401.

High-energy fractures of the lower limb are common in civilian and military populations,<sup>1,2</sup> with long-term consequences for both the individuals and health services if inadequately managed.<sup>3,4</sup> In cases of 'open' fracture, exposure to contamination from the environment increases the risk of complications.<sup>5</sup> Infection rates may be as high as 27%, even in specialist trauma centres.<sup>6</sup>

Studies of the economic costs associated with the management of open lower limb fractures are lacking. Limited evidence suggests that wound complications in patients with an open fracture of the lower limb, such as deep surgical site infection (SSI), lead to increased economic costs and significantly impaired health-related quality of life over the first 12 months following injury.<sup>7</sup> One economic study conducted in eight United States trauma centres estimated a mean two-year health care cost of \$91 106 for patients treated with amputation (2002 price).

Current guidelines recommend that open lower limb fractures are initially managed with antibiotics and surgical excision (debridement) to remove damaged tissue and contamination. For those fractures that cannot be closed primarily after the first wound excision, the traditional approach in the United States is to use a temporary wound cover. This introduction presents methods and concepts used throughout the report, including a

With  
Atypon  
Connect



She is already logged in to Remark and can start annotating the article.





125

Views

4

CrossRef citations  
to date

12

Altmetric

Original Articles

# Subspace identification with constraints on the impulse response

Ivan Markovsky & Guillaume Mercère

Pages 1728-1735 | Received 03 Mar 2016, Accepted 29 Jul 2016, Accepted author version posted online: 30 Aug 2016, Published online: 12 Sep 2016

Download citation <https://doi.org/10.1080/00207179.2016.1219922>



System identification with prior knowledge ... (Ivan Markovsky)

[Edit Capsule](#)

Re-Run

Timeline

Ivan Markovsky committed Jan 22, 2019

Version 1.0

Reproducibility

Files

README.md

Commands

Subspace identification with constraints on the impulse response

Summary

Subspace identification with constraints on the impulse response

## People also read

- Article
- [Recursive subspace identification subject to relatively slow time-varying load disturbance](#)

With  
Atypon  
Connect

She is already logged in to Code Ocean to view and run the code associated with the article.

## Author Main Menu

### Announcements

**There is a new Copyright Transfer Agreement form that allows for a Digital Signature.** You can find that here: [Copyright Transfer Agreement \(2.28.19\)](#). You can find instructions for creating a Digital Signature in Adobe here: [Instructions: Create a Digital Signature](#).

### New Submission Interface for Authors

**ASCE is rolling out a new submission interface for authors.** Preview new features in this video: [Manuscript Submission with Xtract in Editorial Manager](#)

To best prepare Word documents to interact with the new submission process, please download this document: [Preparation Instructions for Submission](#)

Tools

With  
Atypon  
Connect

### New Submissions

[Submit New Manuscript](#)

Submissions Sent Back to Author (0)

Incomplete Submissions (0)

Submissions Waiting for Author's Approval (0)

Submissions Being Processed (0)

### Revisions

Submissions Needing Revision (0)

Revisions Sent Back to Author (0)

Incomplete Submissions Being Revised (0)

Revisions Waiting for Author's Approval (0)

Revisions Being Processed (0)

Declined Revisions (0)

### Completed

Submissions with a Decision (0)

Submissions with Production Completed (0)

**MOCK-UP ONLY:  
Connect is not yet integrated  
with Aries Editorial Manager.**

She is already logged in to the journal's editorial system when she is ready to submit her paper.

A

# What is Atypon Connect?

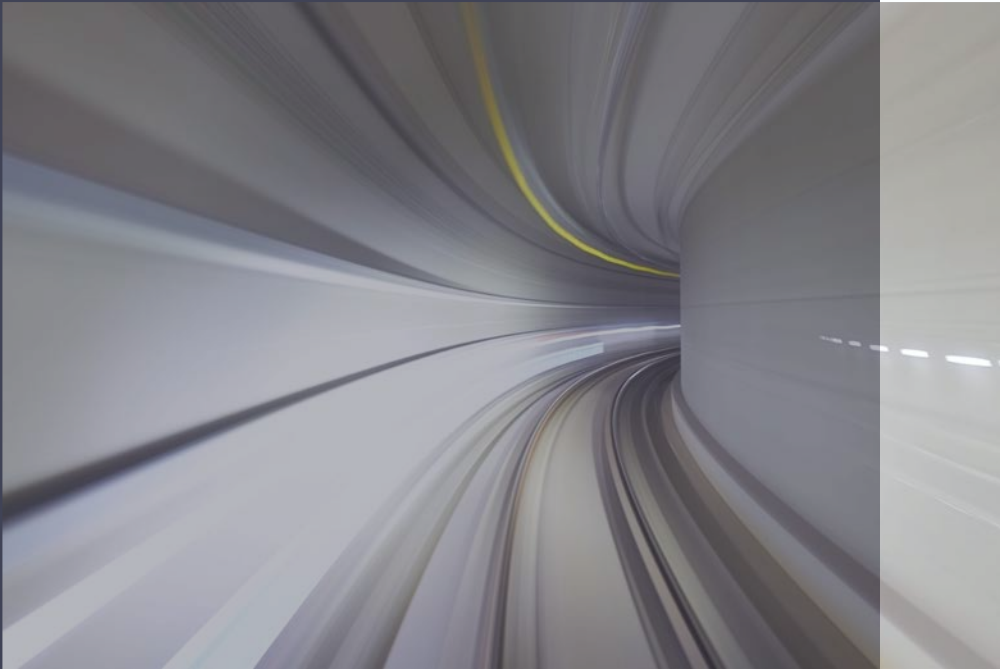




connect

**Connect is an identity management service for single-sign-on access to all online scholarly resources**

It lets users move seamlessly across their research activities.





connect

- A unique ID that works across the **publisher sites and applications** researchers and practitioners use daily
- It connects users' **other identities** (ORCID, Google, Twitter, institutional)
- Users control what profile data is shared with sites and services

*Connect does **not** authorize users' access to sites and services—it simply links them to the systems that do.*

A

How it works for  
researchers &  
practitioners



connect

Accelerating research discovery to shape a better future

# Today's research, tomorrow's innovation

Search publications, articles, keywords, etc.



Advanced Search

1,600+ Journals

225+ Reference Works

22,000+ Online Books

## Resources

### Researchers

Register online

Discover tools

Find training and resources

### Librarians

Manage your account

View products and solutions

Find resources, training, and support

### Societies

Publish with Wiley

Explore our resource library

Learn about topics and trends

### Authors

Submit a paper

Track your article

Learn about Open Access

# *Awesome Publishing*

## Sign In

to continue to Awesome Publishing



Email

---

Continue



# *Awesome Publishing*

## Verify email

A temporary code was sent to your email.  
Check your inbox and enter the code below to continue.

Enter your temporary code

---

Continue

No code received? [Get a new one](#)

[< Back](#)



Accelerating research discovery to shape a better future

# Today's research, tomorrow's innovation

Search publications, articles, keywords, etc.



Advanced Search

1,600+ Journals

225+ Reference Works

22,000+ Online Books

## Resources

### Researchers

Register online

Discover tools

Find training and resources

### Librarians

Manage your account

View products and solutions

Find resources, training, and support

### Societies

Publish with Wiley

Explore our resource library

Learn about topics and trends

### Authors

Submit a paper

Track your article

Learn about Open Access



← Institutional Memberships

INSTITUTIONAL MEMBERSHIPS

Verifying your institutional memberships in Connect will allow you to get all the benefits from them everywhere you go with your Connect account

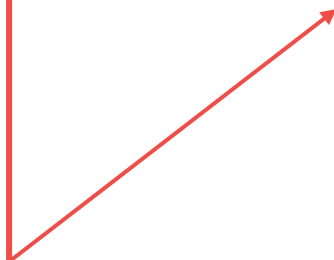


Harvard University



University of Edinburgh

Affiliate institutional identities by simply entering university email addresses



Add New






SIGN IN OPTIONS

You can sign-in to your Connect account with any of the following identities. For safety reasons its recommended to configure at least two.

 j.smith@gmail.com

 jsmith@harvard.edu

Affiliate additional identities with your profile

Add ORCID 

Add Google 

Add Twitter 

Add email 



## Benefits to researchers & practitioners

- **Eliminates the frustration of repetitive logins**
  - No need to create or type “yet another login”
- **Puts users in control of their personal data**
  - They choose what info is shared with websites
  - Transparent security and privacy settings
- **Stays with users through career/affiliation changes**
- **Fast and easy account creation**
  - Use ORCID or Google ID to register





## Challenge #2: For publishers

### **Publishers don't know their users**

- Most visitors to publisher sites don't authenticate
- They access content via institutional IPs
- They don't login even if they have an account

### **As a result...**

- Personalized services are underutilized
- Publishers cannot monetize audiences effectively

# A

## SOLUTION



connect

Tells you about your visitors—name, email, and (optionally) affiliation, without forcing users to explicitly authenticate every time

Data can be combined with other info. to provide personalized services and higher audience monetization

A woman with long, wavy brown hair and glasses is sitting at a desk, focused on her work. She is wearing a dark leather jacket over a dark top. Her right hand is on the laptop trackpad, and her left hand is holding a pen over a document. The background is a blurred office environment with a window and a lamp. A large, dark blue diagonal shape is overlaid on the right side of the image.

A

## Why Connect?

Eliminating barriers to  
research, industry-wide



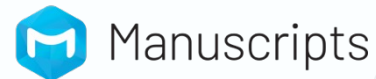


**Participating sites** will give their users instant access to a growing number of powerful apps and plug-ins directly from your site—**without a separate login**

AUTHOREA

REMARQ

FROM REDLINK



**Benefits to  
participating publishers  
& researcher apps**



## Benefits to publishers & researcher apps

- **Ends** user authentication **frustration**
- **Incentivizes users to register** with your site
- Identifies site visitors **without forcing them to explicitly authenticate every time**
- Links the user institution affiliations with multiple methods including RA21, email and IP address
- May help curtail visits to **pirate sites**



connect

Supports the industry's  
goal of simplified access

## Benefits to the industry

- All publisher sites can participate, on any platform—not Literatum-dependent
- Leverages Atypon's 200+ client base to solve an industry-wide problem
- Enables a better user experiences on publisher sites
- Increases traffic to publishers' sites

## Potential benefit to Atypon

- Improves Literatum's value by driving traffic to publisher sites and reducing traffic to pirate sites



## Designed to work alongside RA-21 and CASA

### Key differences

- **RA-21 and CASA**
  - Institutional access
  - Journals only (not researcher apps)
  - Users remain **anonymous** on each website
- **Connect**
  - Individual access
  - Researcher apps as well as journals
  - Users data passed to each website visited



## Benefits to librarians

- A secure approach to off-campus usage *without* additional admin costs or infrastructure
- Protects users' security and privacy
- Improves users' online experience
- Encourages greater use of institutional resources



# A

## Librarian Feedback

*“It’s almost too good to be true.”*

*“Looking forward to the full roll out of this resource.”*

*Connect* was met with interest and approval at a [Charleston Library Conference focus group](#), which yielded many suggestions for features, functionality, and use cases.

A

## Supporting Connect

Become a participating  
Connect site

[connect@atypon.com](mailto:connect@atypon.com)



connect

Connect adds a simple form to your login page—and user data starts flowing automatically.

Already a user? [Sign in](#)

### Sign up to Connect

to continue to

 ORCID

 Google

 Twitter

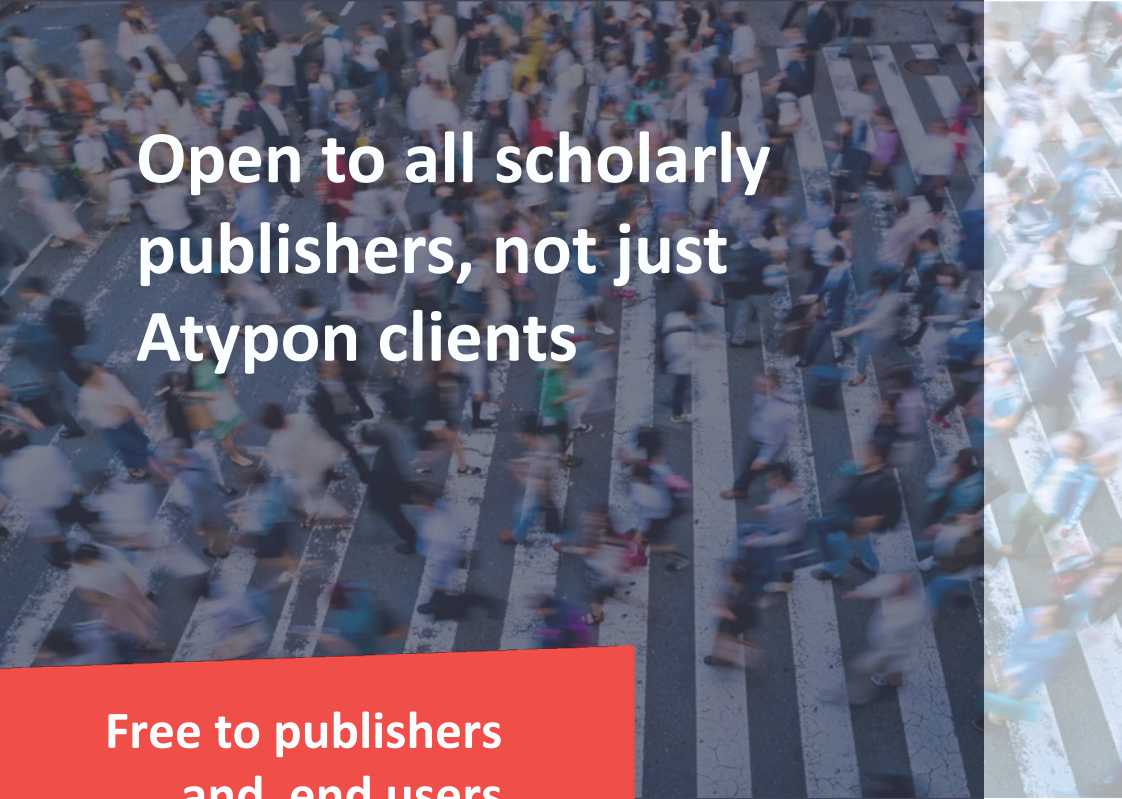
Name

Email

Continue

A temporary code will be sent to your email





Open to all scholarly  
publishers, not just  
Atypon clients

Free to publishers  
and end users

# Help eliminate barriers to research, industry-wide

## Become a participating *Connect* site

- We're currently building a network of application providers and publishers
- Wide adoption will make Connect more useful for its users when it formally launches in Q1 2020

Contact: [connect@atypon.com](mailto:connect@atypon.com)

A

## User data and privacy





## How does Connect protect a user's privacy?

- Connect is GDPR compliant
- Transparent security and privacy settings
- Connect profile gives users complete control over what they share with the sites and apps
- **Connect has no visibility into publisher's user data and activity**



ACCOUNT SETTINGS

Record account activity



Searchable Profile

In collaborative applications, such as Manuscripts, users can search for my name and invite me to collaborate



Marketable Profile

My e-mail address can be used for communication related with the marketing of new products and services



j.smith@gmail.com

Demographic Data

The demographic data of my profile (birth, location) can be shared with the applications where I login with my Connect account



Institutional Memberships



Email address and Name



Users choose what personal data gets shared with the websites they visit





← Network & Apps

My network    Atypon applications



ONE ACCOUNT, ACCESS TO ALL

Discover new researcher applications and publisher sites in the Connect Network. By connecting with a network member, you authorize Connect to share your profile with them. Your information will be used in accordance with their respective terms of service and privacy policies. You can remove this connection at anytime in your account settings.

 **Chapman & Hall**  
www.chapmanandhall.com Connect

 **Wiley** Last seen yesterday Revoke  
www.wiley.com

 **Addison-Wesley**  
www.addisonwesley.com Connect

 **World Scientific Publishing**  
www.world.com Connect

 **Addison-Wesley**  
www.addisonwesley.com Connect

Join publisher sites and apps with your Connect profile



A

# The technology



## Non-proprietary and standards-based

- Uses OpenID Connect and OAuth2, the de facto standards for secure authentication and authorization
- Open standards enable easy integration





## Industry Certification: “Grade A”

- A Praetorian penetration test of Connect resulted in its highest grade
- Connect’s existing vulnerability measure is “within the top 5–10% of Praetorian’s client base.”







## Connect and Literatum

- Connect and Literatum are separate software products
- Connect works on any participating site, not just sites built on Literatum

A

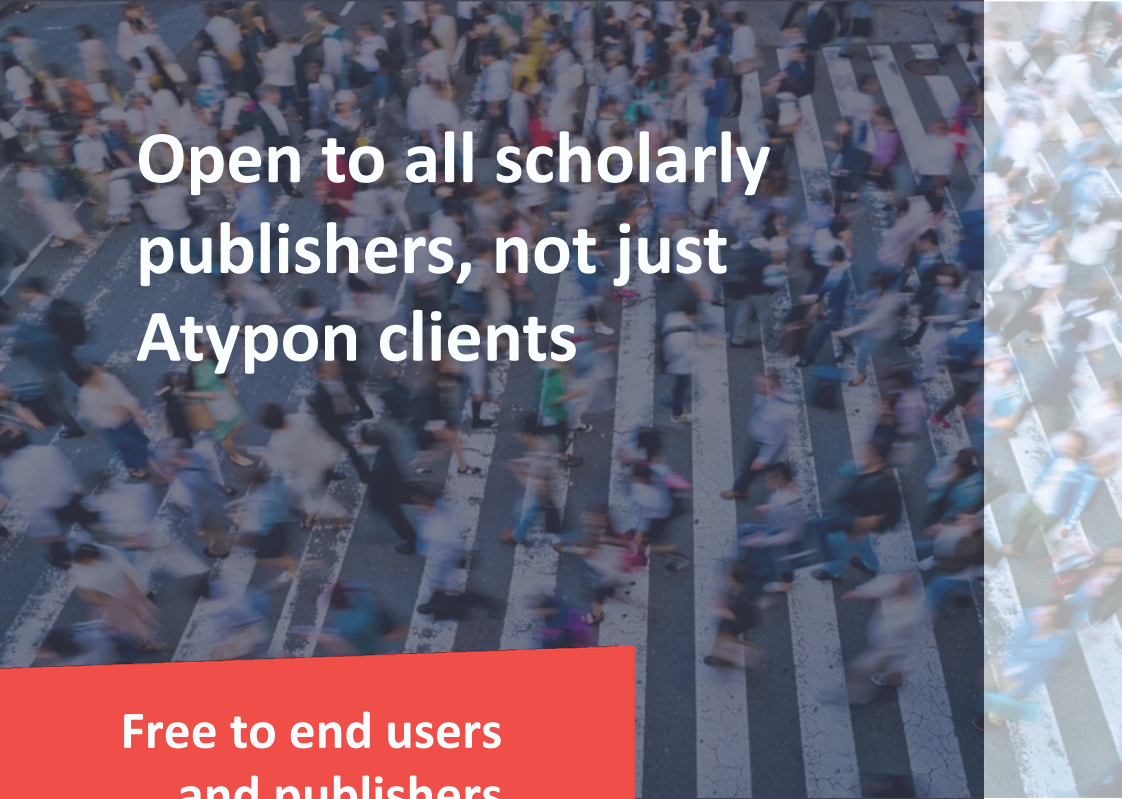
## Supporting Connect

Become a participating  
*Connect* site!

Free for users and publishers



connect



Open to all scholarly  
publishers, not just  
Atypon clients

Free to end users  
and publishers

# Help eliminate barriers to research, industry-wide

## Become a participating *Connect* site

- We're currently building a network of application providers and publishers
- Wide adoption will make Connect more useful for its users when it formally launches in Q1 2020

Contact: [connect@atypon.com](mailto:connect@atypon.com)

# Q&A

Become a participating Connect site!  
[connect@atypon.com](mailto:connect@atypon.com)



connect

Eliminating barriers to research.



ATYPON

# WebinarSeries

[atypon.com/webinars](https://atypon.com/webinars)

- **View previous webinars**
- **Download webinar content**
- **Register for future webinars**
- **Recommend new webinars**

@atypon  
atypon.com  
info@atypon



# Engage 2019 Europe

ATYPON USER CONFERENCE

Friday, December 6  
London

*Right after STM Week*

[engage@atypon.com](mailto:engage@atypon.com)

**Register now!**